



CONFERENCE RESORT



ELLCOTTVILLE NEW YORK • HOLIDAYVALLEY.COM



ACCOMMODATIONS FOR UP TO 1000+ GUESTS



UNSURPASSED NATURAL BEAUTY



SOPHISTICATED, YET RELAXED ENVIRONMENT



WELCOME TO HOLIDAY VALLEY

The relaxed, yet sophisticated resort environment makes Holiday Valley Western New York’s premier conference destination. Holiday Valley Mountain Resort & Conference Center is a perfect combination of convenience and seclusion. Our professional staff serve distinguished corporate clients with a unique variety of meeting areas, award winning accommodations, creative banquet services and abundant recreational activities. Come see how the natural beauty of Holiday Valley is an ideal setting for your next meeting or corporate outing.

CUSTOMER TESTIMONIALS

NOCO Energy Corp., Tonawanda, NY

“Whether planning an event or just a day of fun, the staff at Holiday Valley does EVERYTHING to make it a stress free and enjoyable time. They truly know the meaning of hospitality. They always go above and beyond the expectations of their guests. Due to the personable and genuine thoughtfulness of your meeting planners Heather, Diane and Katie, it’s always a pleasure planning our event.”

Roswell Park Cancer Institute, Buffalo, NY

“Best conference we have ever had! Totally stress free and everything from food to set-up was great. The staff was SO friendly and accommodating.”

Browncroft Community Church

“Our women’s retreat at Holiday Valley was a resounding success. The ladies loved the beautiful surroundings (October was spectacular!), the staff was wonderful to work with, the rooms were great ... we will definitely be back!”



HOLIDAY VALLEY CONFERENCE RESORT

6 LODGES ... 22 MEETING ROOMS ... EVENTS UP TO 1000 PEOPLE.



Sharpen the mind & inspire great vision at Holiday Valley Resort & Conference Center

Our full service meeting facilities are nestled into the foothills of the Allegheny Mountains, commanding magnificent views of the surrounding landscape. Accommodations are available at the Inn at Holiday Valley, the Tamarack Club or in a variety of well appointed condominiums. The banquet staff is experienced, creative and willing to accommodate your unique requests. The variety of spacious facilities and outdoor venues for banquets, receptions or social events is unmatched by any facility in the region. We can even take you by chairlift to the top of the mountain. Our experienced conference services team will make your meeting planning easy and efficient. We will take care of:

- CONFERENCE ROOM SET UP
- AUDIO/VISUAL NEEDS
- FOOD AND BEVERAGE SERVICE
- ON SITE ACCOMMODATIONS
- RECREATION COORDINATION
- PLANNING EXCURSIONS
- SPOUSE PROGRAMS
- TRANSPORTATION
- TEAM BUILDING ACTIVITIES



Enjoy our 18 hole golf course, adjacent to the Inn at Holiday Valley and the Tamarack Club.



Rejuvenate with a spa treatment at Falling Waters Spa in the Tamarack Club.

APRÈS ADVENTURES

Unwind after a day of meetings, enjoy golf, scenic hiking or mountain biking, or simply relax pool side. In the winter, Holiday Valley offer the finest in skiing and snowboarding as well as cross country, snowshoeing and snow tubing. Historic Ellicottville with an array of unique shops, boutiques and restaurants is just one mile away.

FOOD & BEVERAGE SERVICE

Whether your event includes an elegant banquet, a pool side barbeque, a cocktail party on the plaza deck or a mountain top picnic, our food and beverage service can help you plan an unforgettable meal.



Fine dining is available both inside and outside at John Harvard's Brew house located in the Tamarack Club.



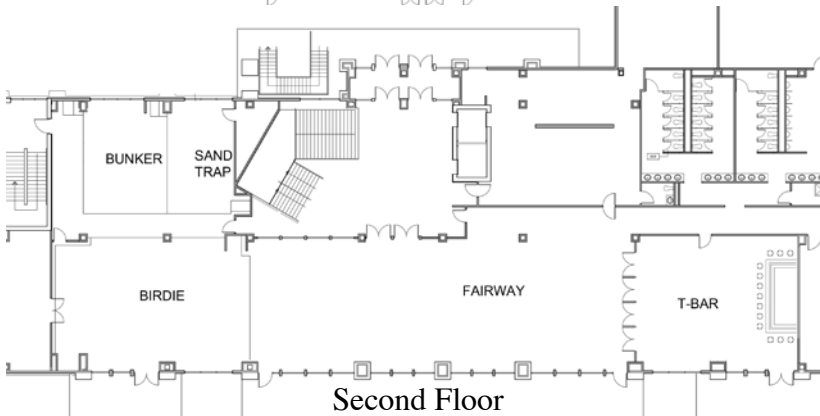
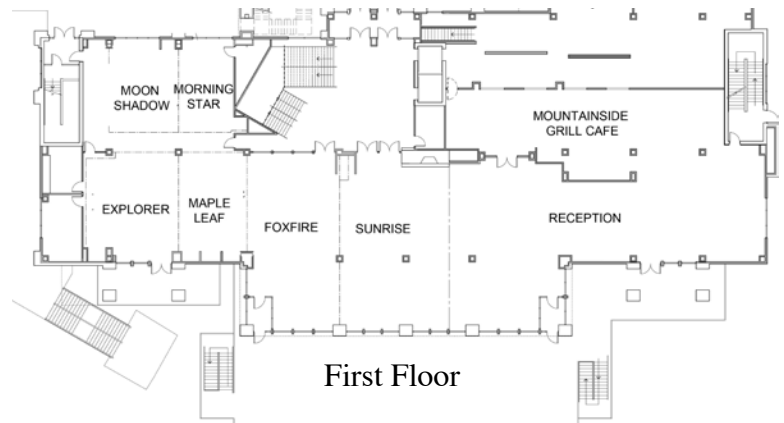
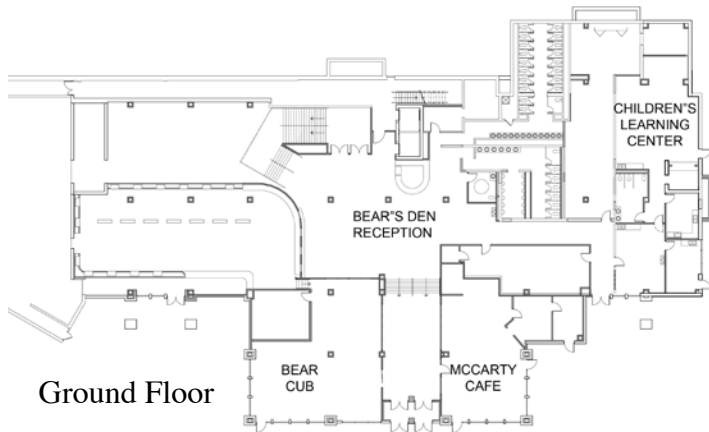
The Village of Ellicottville has a character all its own.

Holiday Valley Lodge



The new \$12 million Holiday Valley Lodge opened in December of 2012. This beautiful 66,000 square foot building features a soaring 32 foot cathedral ceiling, tongue and groove cedar decking, thick wooden beams, a 2 story stone chimney with fireplaces on both floors and a natural stone and cedar exterior. The Lodge contains 14 meeting and reception rooms, with many of these available on a year 'round basis. Multi-level decks have commanding views of the ski slopes and golf course.

The Holiday Valley Lodge is centrally located, adjacent to the Tamarack Club, the base of the Mardi Gras and Cindy's chairlifts and steps from the Double Black Diamond Golf Course.



ROOM	SIZE (FEET)	AREA (SQ. FEET)	CEILING HEIGHT	CLASSROOM	THEATER	CONFERENCE	BANQUET	RECEPTION
Bear's Den	41 X 50	2050	9'6"	110	186	N/A	136	205
Bear Cub	22 X 45	990	12'	53	90	N/A	66	99
Moonshadow	27 X 21	567	9'6"	30	52	12	37	56
Morning Star	27 X 16	432	9'6"	24	40	12	28	43
Explorer	29 X 29	841	9'6"	45	75	18	56	84
Maple Leaf	29 X 20	580	9'6"	31	52	18	38	58
Foxfire	56 X 26	1404	9'6"	75	127	28	93	140
Sunrise	54 X 68	3672	9'6"	198	333	N/A	244	367
Sand Trap	27 X 17	459	9'6"	N/A	N/A	20	N/A	N/A
Bunker	20 X 27	540	9'6"	30	49	12	36	54
Birdie	32 X 50	1600	9'6"	86	145	20	106	160
Fairway	32 X 96	3072	16-32'	166	279	20	205	307
T-Bar	41 X 30	924	10'	50	N/A	12	50	80

Yodeler Lodge

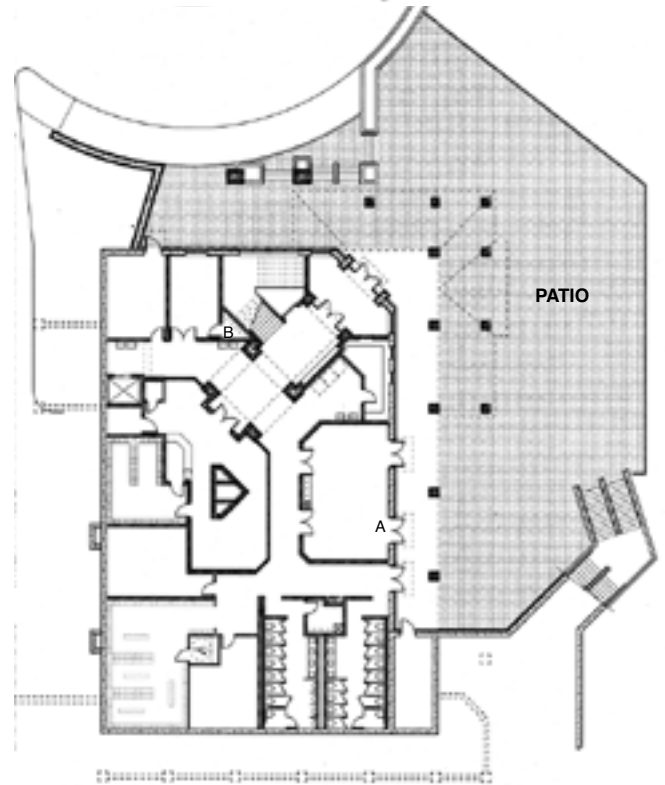
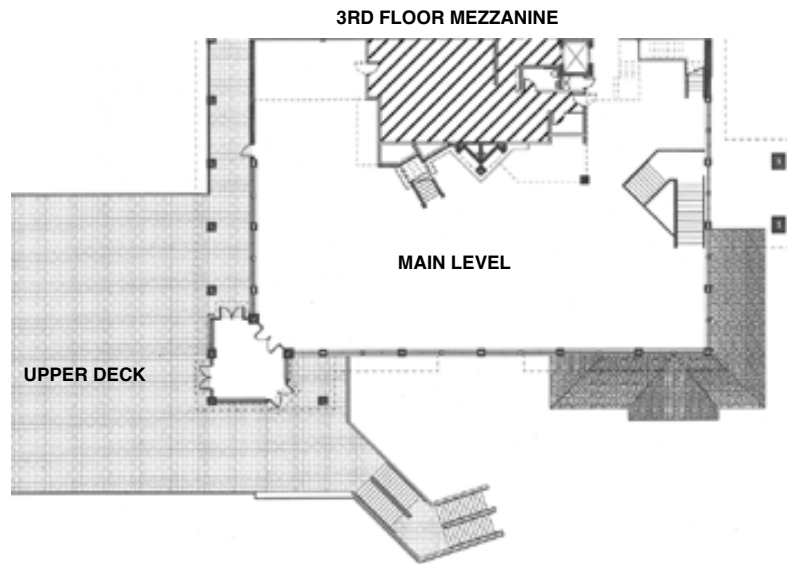
The Yodeler Lodge is a spectacular building with massive wooden beams, a soaring ceiling and a two-sided stone fireplace. The open floor plan of the main floor creates an ideal large-group meeting space for spring, summer or fall events. The graceful center stairway leads to a mezzanine level with a third fireplace. Two smaller meeting rooms are located on the ground level and are available for meetings year 'round. The large two-tiered deck/patio can be tented for unique meal service or an outdoor event.



The Yodeler Lodge is an ideal setting for large banquets and receptions.



Theater style setup in the Yodeler Lodge seats up to 600 people.

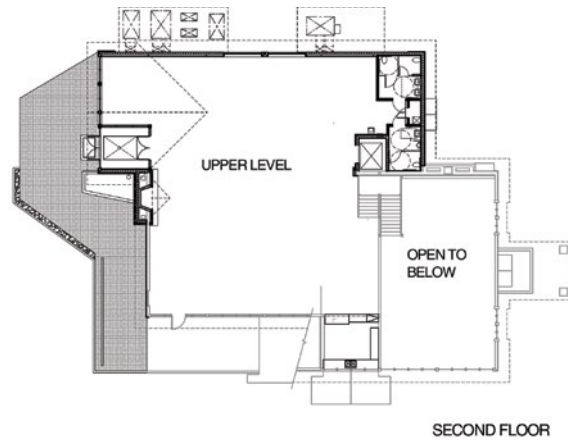
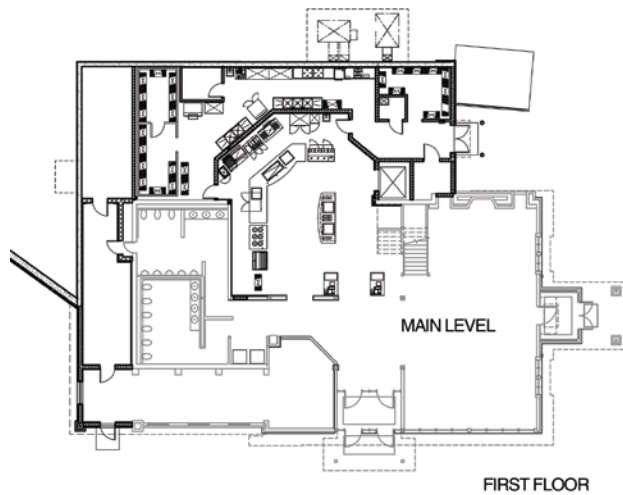


The Champagne Sundek is a unique covered outdoor space with a fireplace.

ROOM	SIZE (FEET)	AREA (SQ.FEET)	CEILING HEIGHT	CLASSROOM	THEATER	CONFERENCE	BANQUET	RECEPTION
Main Floor	114 x 46	5244	Cathedral	283	476	N/A	349	524
Mezzanine	36 x 23	828	Cathedral	44	75	20	55	82
Falcon Room (A)	32 x 20	640	9'4"	34	58	20	42	64
Eagle Room (B)	19 x 12	228	9'4"	12	20	12	15	22

Tannenbaum Lodge

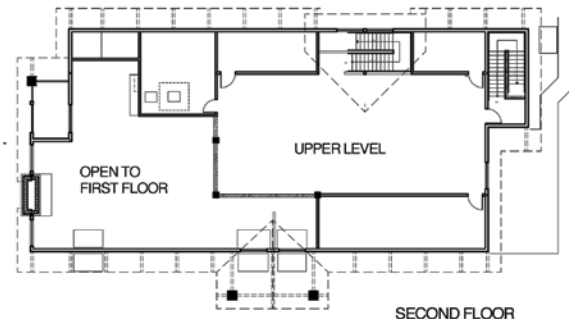
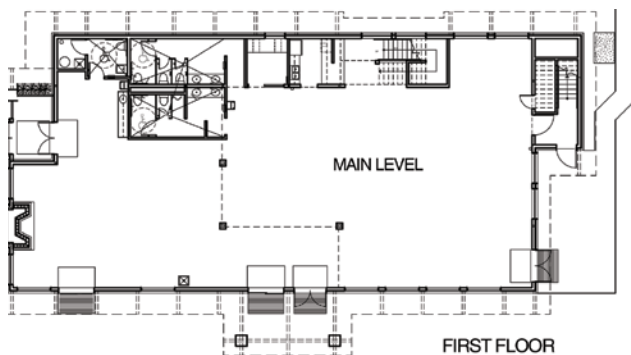
The secluded Tannenbaum Lodge can seat up to 400 people banquet style on two floors for spring, summer or fall functions. Tannenbaum is the perfect location for a reception or large meeting or conference with its 2 inviting fireplaces, dramatic cathedral ceilings, a large deck and woodland setting. Tannenbaum Lodge is handicapped accessible and has ample parking. Sky High Aerial Adventure Park and Mountain Coaster are located adjacent to Tannenbaum.



ROOM	SIZE (FEET)	AREA (SQ.FEET)	CEILING HEIGHT	CLASSROOM	THEATER	CONFERENCE	BANQUET	RECEPTION
Upper Level	58 x 64	3712	Cathedral 20'	200	337	20	247	371
Lower Level	48 x 28	1344	Cathedral 20'	72	122	20	89	134

Creekside Lodge

The Creekside Lodge, is adjacent to the Clubhouse Chalet and is within walking distance of the Inn at Holiday Valley and the Tamarack Club. Creekside features a great view of the golf course, a stone fireplace and an exterior deck that sits above a rushing stream.

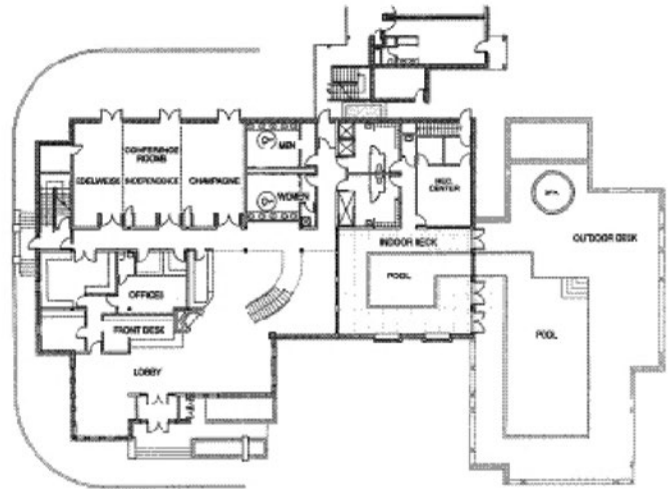


ROOM	SIZE (FEET)	AREA (SQ. FEET)	CEILING HEIGHT	CLASSROOM	THEATER	CONFERENCE	BANQUET	RECEPTION
Lower Level	30 X 104	3120+	10'-20'	168	283	N/A	208	312
Upper Level	26 X 65	1690	8'	91	153	20	112	169

The Inn at Holiday Valley



The Inn features well appointed guest rooms, spacious and unique suites accommodating over 400 guests.



The award winning Inn at Holiday Valley is a delightful experience in comfortable lodging, bright meeting rooms, gracious hospitality and just the right amenities. The Inn is located at the entrance to Holiday Valley, with convenient access to recreation and the meeting facilities of the resort. The 102 spacious guest rooms are arranged around free parking and landscaped walkways. The meeting rooms are located in the central lobby building, along with several informal meeting areas, a lounge, an indoor-outdoor heated year 'round pool, hot tub, sauna, and exercise room. Guests of the Inn enjoy a hearty continental breakfast.

ROOM	SIZE (FEET)	AREA (SQ.FEET)	CEILING HEIGHT	CLASSROOM	THEATER	CONFERENCE	BANQUET	RECEPTION
Edelweiss Room.....	25 x 16	400	9'6"	18	40	12	32	45
Independence Room.....	25 x 16	400	9'6"	18	40	12	32	45
Champagne Room.....	25 x 16	400	9'6"	18	40	12	32	45
Combined	25 x 48	1200	9'6"	60	125	n/a	84	125

Tamarack Club



The Tamarack Club's dedicated conference rooms accommodate up to 80 people and are available year 'round. The Tamarack Club is centrally located in

the resort's base area and overlooks the slopes in winter and our 18 hole golf course in the summer. The 138 lodging rooms offer studio to three bedroom units can accommodate 500+ guest. The Tamarack Club offers four star amenities including indoor/outdoor heated year 'round pool, two outdoor hot tubs, a health club, room service, underground parking, concierge service Falling Waters Spa and John Harvard's Brew House.



Over 200 fully furnished condominiums & homes also available in Ellicottville and nearby managed by Holiday Valley Rental Properties.



ROOM	SIZE (FEET)	AREA (SQ.FEET)	CEILING HEIGHT	CLASSROOM	THEATER	CONFERENCE	BANQUET	RECEPTION
Snowledge	36' x 23'	828	9'6"	44	75	20	55	82
Laurel	15' x 20'	300	9'6"	n/a	n/a	12	n/a	n/a
Combined	51' x 23'	1173	9'6"	76	100	20	80	180

HOLIDAY VALLEY MOUNTAIN CONFERENCE RESORT

AIRPORTS/DRIVE TIMES

- Buffalo Niagara International Airport
Buffalo, New York 50 miles1 hour
- Chautauqua County Regional Airport
Jamestown, New York..... 40 miles45 mins.
- Cleveland Hopkins International Airport
Cleveland, Ohio 190 Miles.....3 hours
- Erie International Airport
Erie, Pennsylvania..... 99 miles1.5 hours



BY AUTOMOBILE

- From West or East
I-86 to Exit 21 in Salamanca.
North on Route 219, 10 miles
to Holiday Valley.
- From North; I-90 Exit 55
Route 219 South to Ellicottville,
continue on Route 219,
1 mile to Holiday Valley.
- From South;
Route 219 North to Salamanca,
continue on Route 219,
10 miles to Holiday Valley.



PROPERTY MAP

